



## REPUBLIC OF NAMIBIA

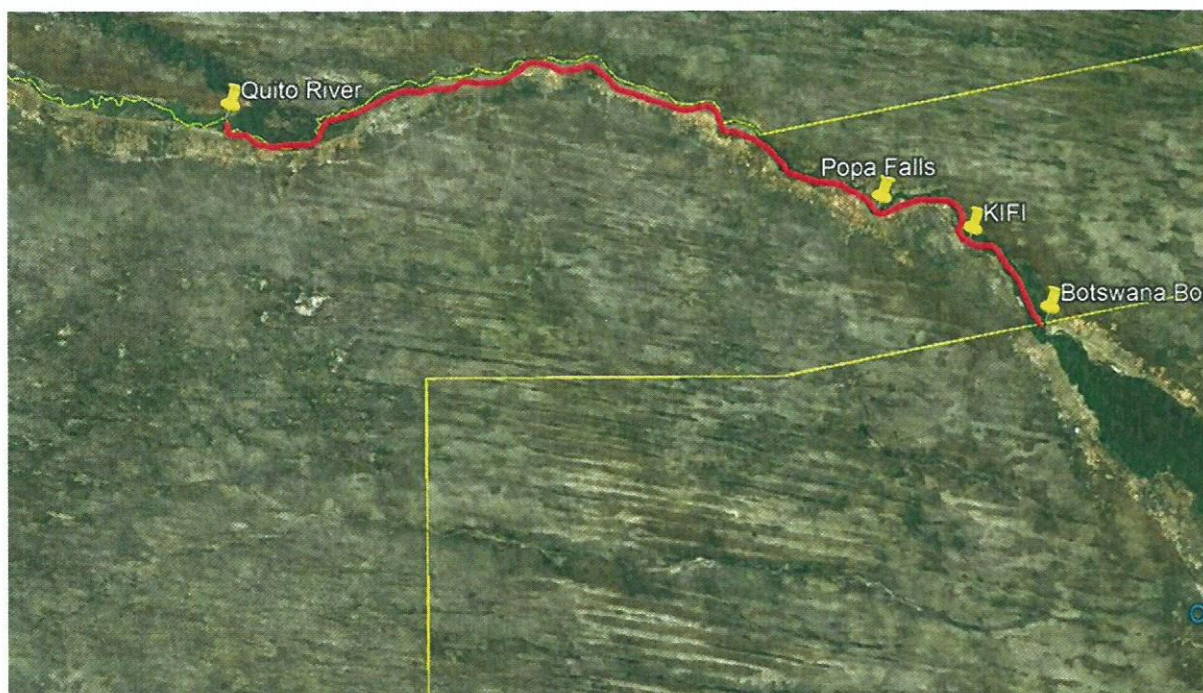
### MINISTRY OF FISHERIES AND MARINE RESOURCES

Tel: (061) 2053021  
 Fax: (061) 246009  
 Enquiries: RR Cloete  
 Reference No.: 10/2/11/1  
 2017

P/Bag 13355  
 Windhoek  
 9000  
 13 October

#### TO WHOM IT MAY CONCERN

#### **MEDIA RELEASE: ANTHRAX OUTBREAK BWABWATA/MAHANGU: DO NOT CATCH, HANDLE, MOVE OR EAT FISH FROM THE AFFECTED AREA**



*Figure 1: Map of area proposed for no handling and movement of fish, no fishing and movement of boats and nets from affected area downstream of Poppa Falls (incursion) to Quito river at Katere*

Please be informed that the Ministry of Fisheries and Marine Resources (MFMR) hereby inform the public not to catch, handle, move or eat fish from the affected area (Fig:1 map) due to the outbreak of Anthrax, in this case from the Botswana border ( $18^{\circ}15'16.38''S$ ,  $21^{\circ}47'8.21''E$ ) up to the Quito river conjunction at Katere ( $18^{\circ}0'14.55''S$ ,  $20^{\circ}44'50.24''E$ ) a 139 km stretch of the Kavango River in the Kavango East Region. The movement of nets and boats (discharge of ballast and live well water) from the affected area to other areas should not take place. This allow for a buffer zone of 105 km from the incursion area (south of Poppa Falls:  $18^{\circ}7'15.26''S$ ,

21°34'20.93"E) to Katere. Anthrax is an infection caused by the bacterium *Bacillus anthracis* and is spread by contact with the spores of the bacteria. There is a possibility that fish that is in contact with contaminated water can therefore spread the spores. Kamutjonga Inland Fisheries Institute (KIFI: 18° 9'33.32"S, 21°41'17.14"E) will be the information and emergency response centre for the MFMR. Contact Mr. Renier Burger (Deputy Director: Inland Fisheries, landline: +264(66)259931, cell: +264811242829) or Mr. Francois Jacobs (Acting Chief Fisheries Biologist, cell: +264812868168).

Yours sincerely,

  
**DR. MOSES MAURIHUNGIRIRE**  
**PERMANENT SECRETARY**

2017 -10- 16

Private B. 13035  
WINDHOEK  
MARINE RESOURCES

MINISTRY OF FISHERIES &  
OFFICE OF THE  
PERMANENT SECRETARY