

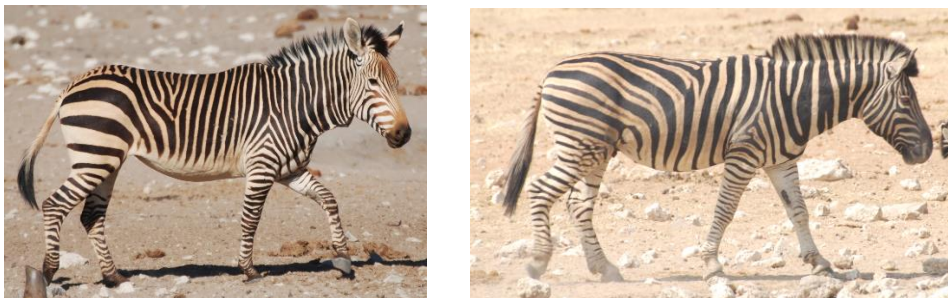
Your photographs can help monitor Hartmann's mountain zebra in Etosha National Park. Please help!

Research underway in Etosha uses the fingerprint-like differences in stripe patterns to recognize individual mountain zebra. Records of these individuals is used to monitor population dynamics and details of social life. You can help this work by sending your photographs to biologist Morris Gosling, as attached files to l.m.gosling@ncl.ac.uk; via Dropbox or to the project's Facebook page (<http://www.facebook.com.EtoshaHMZ>).

Photographs like these, of good quality, with the body side-on to the camera, are particularly useful:-



Please bear in mind two things. 1. To reduce the large amount of time spent identifying individuals, we concentrate on the right side of the zebra's body, and 2. there are two species of zebra in the Park, mountain zebra (often called Hartmann's zebra) and Burchell's zebra (a type of plains zebra). Mountain zebra are found mainly in the west of the Park in the area called Otjovasandu, around the Dolomite Lodge. The two species overlap in this area and visit the same waterholes. Please send only photos of mountain zebra and please send a date and location if possible (name of waterhole, etc).



Left: Hartmann's mountain zebra. Right: Burchell's zebra (note 'shadow' stripes).

Historical photos are also of great interest if dates are available. Research on mountain zebra is carried out in collaboration with the Ministry of Environment and Tourism.