



REPUBLIC OF NAMIBIA

---

## MINISTRY OF MINES AND ENERGY

---

Tel.: +264 (0)61 284-8111  
Fax: +264 (0)61 249144  
E-mail: [info@mme.gov.na](mailto:info@mme.gov.na)  
Website: [www.mme.gov.na](http://www.mme.gov.na)

6 Aviation Road  
Private Bag 13297  
WINDHOEK

Enquiries: Mako Sitali, Bufelo Lushetile  
Reference: 13/4/11/3/6

27 June 2019

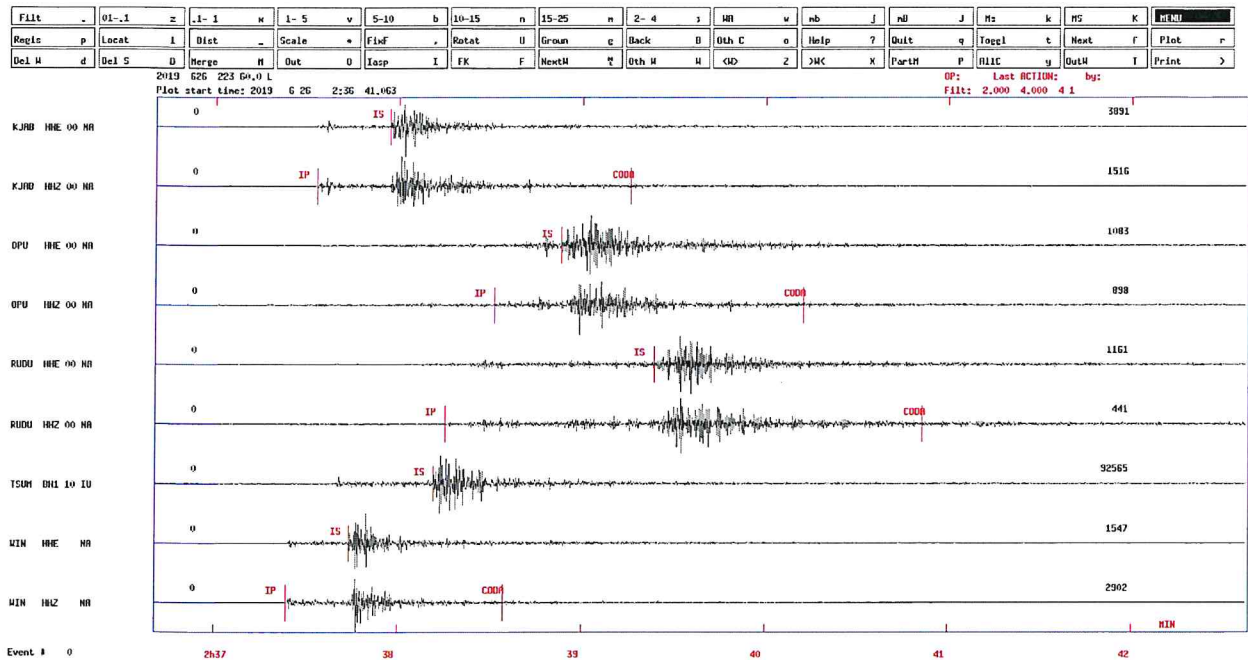
### REPORT ON THE 26/06/2019 EARTHQUAKE RECORDED IN NAMIBIA

#### Introduction

The Ministry of Mines and Energy confirms that an earthquake occurred 26 km South East of Omaruru on Wednesday, 26 June 2019 at 04:37AM, Namibian Time. Five local seismic stations (*Windhoek, Tsumeb, Kamanjab, Opuwo and Rundu*) from the Namibian Seismological Network recorded the event and preliminary analyses were performed on the data. Seismic phases (*which are parts of the seismic waves*) were picked from these stations for analysis and the event is located at latitude **(Y): -21.594S**, longitude **(X): 16.136E**, at a depth of 15 km with local magnitude **(ML) of 3.6**.

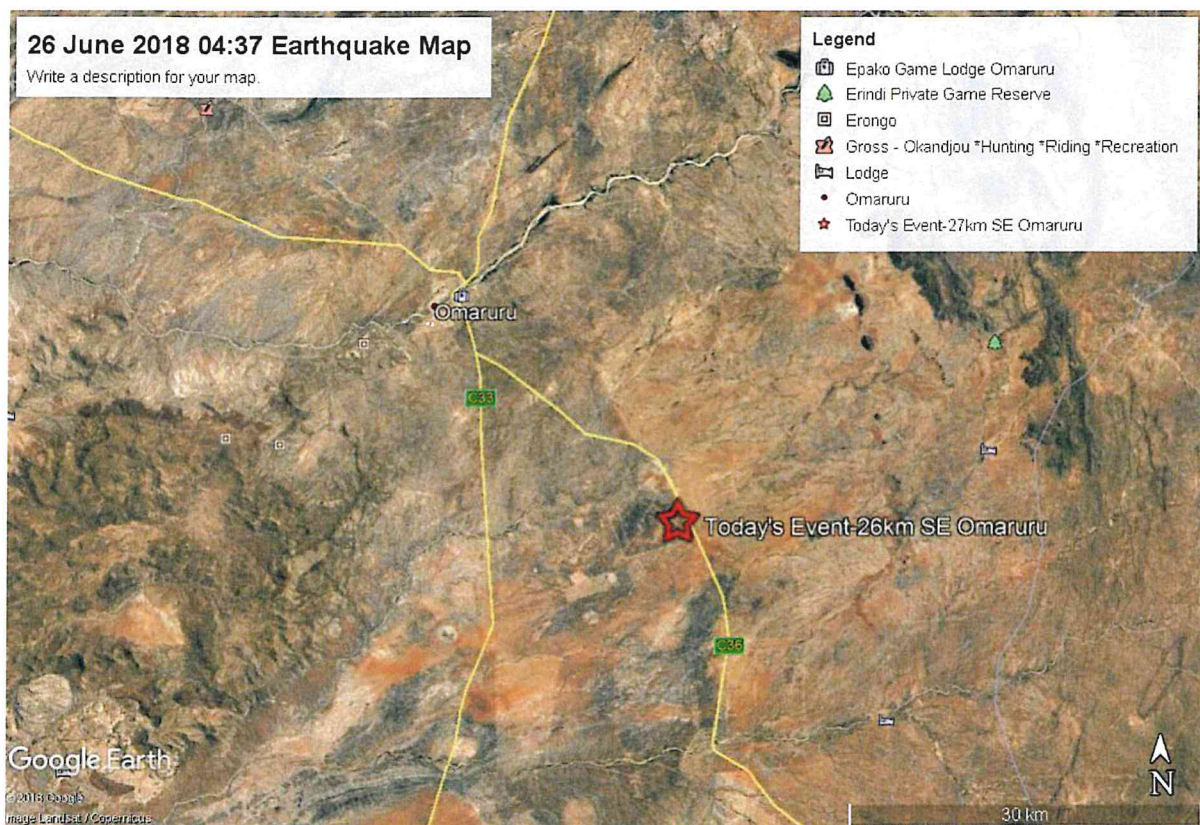
#### Data

At present, five phase readings for initial calculations were picked by the Geological Survey of Namibia for WIN (Windhoek), Tsumeb (TSUM), KJAB (Kamanjab) OPU (Opuwo) and RUDU (Rundu) and as shown below indicating occurrence time at around **04:37**.



**Figure 1:** Waveform traces of the earthquake recorded on 26th of June 2019 at 04:37 local time.

### Epicentral Location Map



**Figure 2:** Location of epicentre of the earthquake (**Red star**), 26 km South East of Omaruru.




Preliminary calculations indicate that the current epicentre of the event is located in an area where there are ancient faults, which are zones of weaknesses underground. The historical records show that the current location is one of the known seismic zones in the country.

### **Safety Measures in case of an earthquake**

- If you are indoor, if possible go outside, otherwise stand near door frames or get refuge by going under the table (figure below)
- If you are outdoors, find a clear spot away from buildings, trees and power lines
- Overhead cabinets should be closed
- Stay and face away from windows
- Watch out for falling objects
- If you are in a car, slow down and drive to a safe place. Stay in the car until the shaking stops



Namibia has a low seismicity (*frequency of earthquakes*), mostly with low intensity events. Earthquakes are natural but unpredictable. Historic records indicate that the magnitudes are relatively low and the occurrence is infrequent.

  
Simeon N. Negumbo  
Executive Director  
Private Bag 13297  
Windhoek

MINISTRY OF MINES AND ENERGY  
OFFICE OF THE  
EXECUTIVE DIRECTOR  
2019-06-27