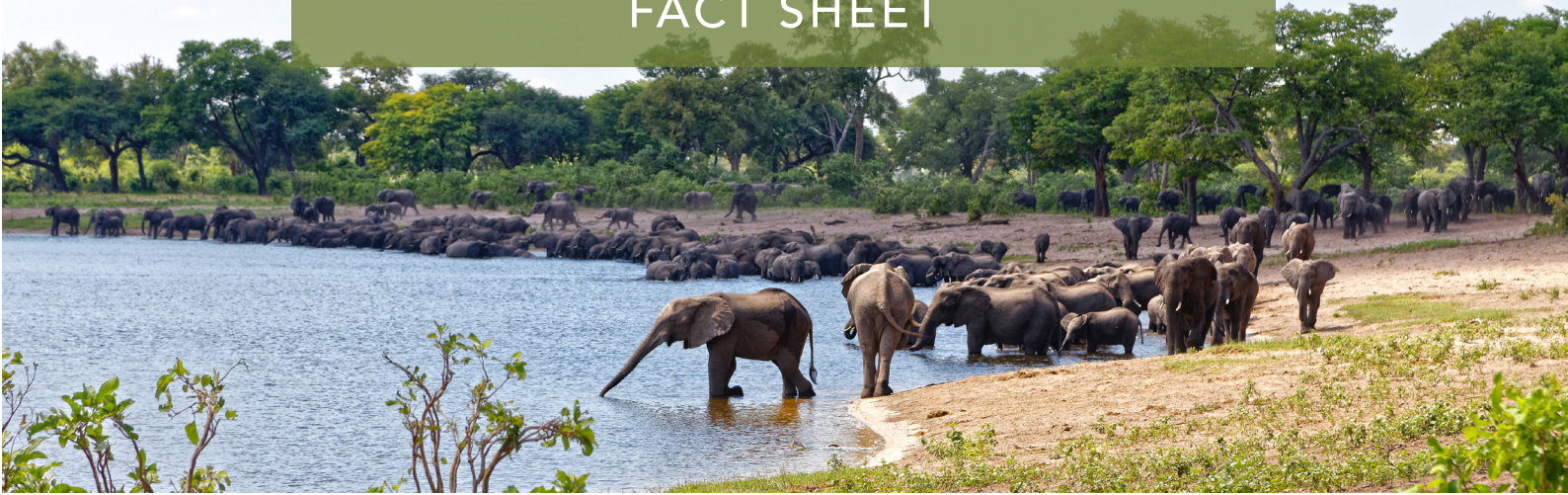


African Monarch Lodges
KAZILE ISLAND LODGE
FACT SHEET



Bwabwata National Park

Kazile Island Lodge is situated on a private island on the banks of the Kwando River, within the heart of KAZA. Kazile together with its sister lodge Nambwa are the only lodges to be uniquely situated within the Bwabwata National Park. The Lodge offers ten Meru tents nestled within a Mangostene forest. The tents overlook the Kwando River as well as the expansive floodplains between the Island and the famous Horseshoe Bend.

Our unquenchable desire to create the most authentic African experience takes you drifting down the unspoilt Kwando River. Explore the fauna and flora up close and personal on a bush walk or a game drive with our experienced guides. A visit to a traditional village allows you the opportunity to understand the local life and culture of our people. The famous Horseshoe Lagoon is the ideal spot for a sundowner after a riveting game drive. Soak up the breathtaking sunsets together with hippos and large herds of elephants silhouetted in purple hues over the water.

LOCATION

- Situated on Kazile Island in the Bwabwata National Park, in the heart of KAZA, in the Zambezi Region
- On the banks of the Kwando River and its floodplains
- Accessible from Kazile Campsite approximately 12km from Kongola off the new tar road between Kongola and the Linyanti
- From Kazile Campsite a short 5 minute boat cruise to the lodge

ACCOMODATION

- 10 tented suites with 2 single beds
- 2 Guide/Pilot tents
- The Lodge can accommodate 20 guests

RATES

- Provided upon enquiry from marketing@africanmonarchlodges.com

SEASONS

Low Season:
December to March

Mid Season:
April to June and November

High Season:
July to October

TENTED ROOM DETAILS & AMENITIES

- Meru Style Tents raised above the ground on wooden platforms
- En-Suite bathroom with Shower
- Fans in all tents
- 220V European two pin plug points for charging equipment
- Hair dryer
- Outside viewing deck
- Personal laptop safe
- Complimentary in-room mineral water

LODGE AMENITIES

- Wifi accessible at the main area
- All major credit cards accepted

ACTIVITIES

- Boat Cruises on the Kwando River
- Game Drives in the Bwabwata National Park
- Guided bush walks with one of our experienced guides
- Visits to the Mashi Traditional Village and Craft Market

ELECTICITY & WATER

- Kazile Island Lodge operates on AC 220V generator power, which is available during the day and evening
- Guest accommodation is equipped with a 220-volt AC plug, which is suitable for hairdryers and the recharging of camera and video batteries
- The Generator is switched off 30min after the last guest has gone to bed. Torches on the bedside tables are provided for the night
- We supply bottled water in the rooms and during activities. While you can drink the water from the taps, we do not recommend it

SMOKING POLICY

- Smoking is only allowed on the private, outside wooden decks that form part of each tented room
- Smoking is not allowed anywhere in the bush or public guest areas or while taking part in any activity

DIETARY NEEDS

- Guests are encouraged to let us know when they make their reservations if they have any special dietary needs

LAUNDRY

- We provide laundry services

MALARIA

- We recommend that our guests take anti-malaria tablets as prescribed by their physician or health clinic. The tablets are advisable all year round. We provide mosquito repellent spray in the tents.

CHILD POLICY

- We welcome children of all ages. All children should be under the control and supervision of their parents at all times.
- Children between the age of 1 and 6 are free of charge for accommodation.
- Children between the ages of 6 to 12 will be charged 50% of the adult rate. Children of the age of 12 count as adults and are charged the full adult rate.

PAYMENT POLICY

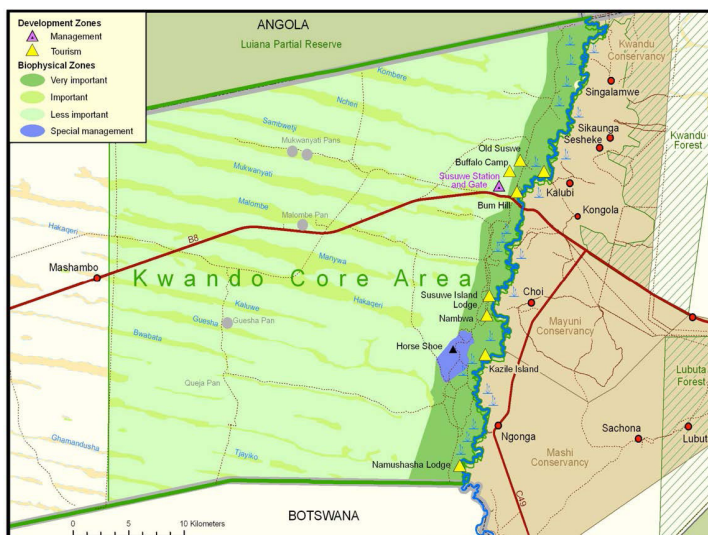
- A 20% deposit is required at least three months prior to arrival, once a reservation is made
- Full payment is due a month prior to arrival
- Bookings will automatically be cancelled if full payment has not been received one month prior to arrival and the deposit will be forfeited.

ACCESS BY AIR

- Immelman landing strip (no floats)
- Co-ordinates S 17° 46' 500" E 023° 18' 300"
- Length of runway 1300 meters
- Directions 00927

ACCESS BY ROAD

- GPS coordinates are: 17°54'11.80"S
23°19'00.70"E
- Road transfers are available from Vic Falls, Livingstone, Kasane and Katima (Rates on request)



DIRECTIONS

Kazile Island Lodge is located approximately 1114km northeast of Windhoek.

To reach the lodge, visitors take the B1 from Windhoek to and until Otavi.

At Otavi, turn right on the B10 and go northeast until Rundu.

At Rundu, go east on the B8.

Pass the Kongola Police Checkpoint.

At Kongola, turn right into the C49.

The lodge is approximately 12km south of Kongola.

You continue on the C49, until you reach the Kazile Campsite Sign.

You will not require a 4X4 for the 2km dirt road to the Kazile Campsite.

Your car can be parked safely at the Kazile Campsite.

A short 5-minute boat cruise along the Kwando River will take you to Kazile Island Lodge.