



Artist Rendering

# Cheetah View Lodge

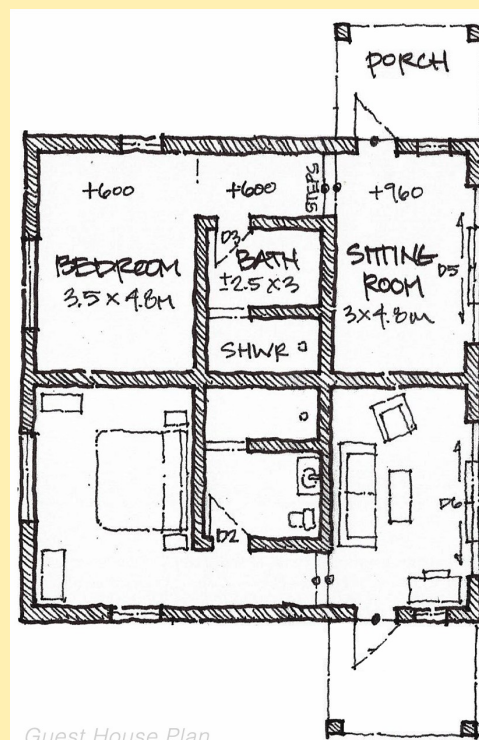
## Opening June 2017

The Cheetah Conservation Fund is the world's leading organisation dedicated to saving the cheetah in the wild. CCF is now offering a unique opportunity for guests to stay on the grounds in close proximity to our 30-plus cheetahs and witness conservation in action through our ecology, genetics and education programmes. With uninterrupted views of the Waterberg Plateau, the five room Cheetah View Lodge is the ideal setting for travellers who want to witness a world class conservation facility at work. Accommodation fees include breakfast plus a 15% discount off cheetah drives and the popular cheetah runs. All proceeds from the lodge support the CCF's continuing efforts to save the cheetah, promote ethical farming and teach coexistence in Namibia.

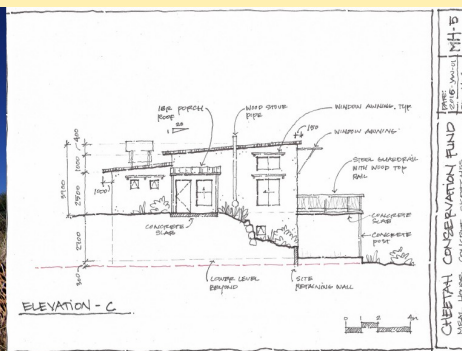
Our Meal House offers a full service restaurant with an open-air veranda for lounging and wildlife viewing at the purpose-built waterhole. The large family room situated below the Meal House also overlooks the waterhole with similarly breathtaking views of the Waterberg Plateau in the distance.

The two guestroom buildings are split into individual suites each with their own private entrance and porch area.

The four standard suites include a double bedroom, bathroom with shower, and a lounge with sofa to accommodate up to two adults. The family room is larger and comfortably takes up to two adults and two additional children in one double and two singles beds.



Guest House Plan



**Cheetah**  
CONSERVATION FUND

# Cheetah View Lodge

Opening June 2017

Build your own tailor-made break at Cheetah View Lodge

Rates: valid from 01.11.2017 to 31.10.2018

## Rooms & Occupancy:

4 x Standard Twin/Double Rooms (max 2 adults)  
1 x Family Room (max 2 adults, 2 children)  
(Child = 16 years of age or under)

## Rates:

All rates are per room per night on a Half Board (Breakfast & dinner) basis

Single - N\$1520  
Double - N\$2790  
Triple - N\$3740  
Quad - N\$4390

## Lunch:

Lunch (2 course set menu) - N\$110 per person per day

All lunches must be booked prior to arrival at Cheetah View Lodge

## Activities:

CCF offers a **15% discount** off Cheetah Runs and Cheetah Drives for guests staying at Cheetah View Lodge

Activities	Description	Schedule	Time (approx)	Min Pax	Reservations	Adult	Child (Under 12)
<b>Cheetah Run</b>	Join our early morning run to experience the breathtaking speed of the cheetah first-hand as CCF keepers exercise our resident cats. (Please Note: Must be 16 yrs or older to enter the run area)	Mon – Sun (08:00 only)	½ Hour	2	<b>Must be booked in advance</b>	N\$408.00 per person	Children not permitted
<b>Cheetah Drive</b>	Climb aboard a CCF safari vehicle to view cheetahs in their natural habitat in our vast enclosures.	Mon – Sun running throughout the day	1 Hour	2	<b>Must be booked in advance to receive the discounted rate</b>	N\$408.00 per person	N\$204.00 per child
<b>Serengeti Sundown</b>	A guided drive into the CCF reserve to soak up the incredible Waterberg sunset & the local wildlife as it prepares for nightfall. (Drinks & snacks included)	Mon – Sun (departure time is seasonal)	2 Hours	4	<b>May be booked in advance or onsite availability permitting</b>	N\$500.00 per person	N\$250.00 per child

To make a booking

Visit: [cheetahecolodge.com](http://cheetahecolodge.com)

Or contact **Exclusive Reservations** - Telephone: +264 (0)61 237 294 or Email: [visit@ccfnamibia.org](mailto:visit@ccfnamibia.org)

